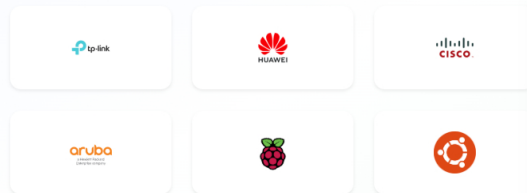


Begin with a Platform

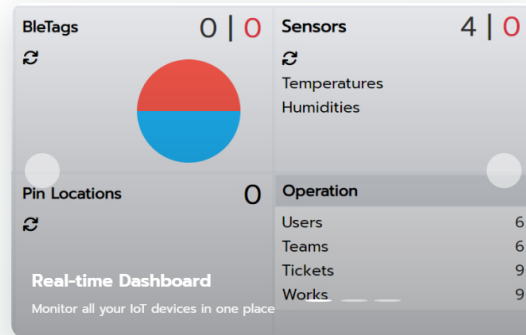
Imagine what's possible if you converge IT, IoT, and physical environments. EaZyTrax makes it real.

[Get Started →](#)[Documentation →](#)

Supported Hardware Platforms



Compatible with major IoT gateway manufacturers and platforms



BLE Tags

1,247

↗ +12% from last week

Active Sensors

89

↗ +5% from last week

Gateways

12

→ Stable

Operations Today

342

↗ +23% from yesterday

Key Features

Powerful tools and capabilities designed to streamline your IoT and tracking operations

Real-time Data Collection

Continuous data reception from BLE gateways and IoT devices ensures that you have up-to-the-minute information.

Comprehensive Data Handling

Supports a wide range of data types, including RSSI, MAC addresses, and beacon protocols like iBeacon and Eddystone.

Flexible Configuration

Easily add and configure devices to meet specific project requirements with intuitive setup tools.

Robust Visualization Tools

Create and customize dashboards for clear, actionable insights with advanced charting capabilities.

Zero-Runtime Overhead

EaZyTrax is designed for efficiency, ensuring smooth operation without the need for additional runtime environments.

Enterprise Ready

Built with enterprise-grade security and scalability to handle large-scale deployments and mission-critical operations.

Enterprise Asset Tracking

Reliable BLE Asset Tracking System

Enterprise-grade Bluetooth Low Energy technology for precise indoor asset management. Trusted by organizations worldwide for mission-critical operations.

99.9% **< 5m** **24/7**
UPTIME ACCURACY SUPPORT



Core Capabilities

Enterprise-grade features designed for reliability and performance



Real-Time Location Intelligence

Continuous monitoring and tracking of assets with sub-meter accuracy using advanced BLE triangulation algorithms.

KEY BENEFIT:
 Reduce asset loss by up to 90%



Energy-Efficient Operation

Ultra-low power consumption with battery life exceeding 2 years, minimizing operational overhead and maintenance costs.

KEY BENEFIT:
 Reduce maintenance costs by 75%



Enterprise Scalability

Robust infrastructure supporting thousands of assets with seamless horizontal scaling and load balancing capabilities.

KEY BENEFIT:
 Scale to 10,000+ assets effortlessly



Intelligent Geofencing

Advanced zone management with customizable boundaries, automated alerts, and compliance monitoring for regulatory requirements.

KEY BENEFIT:
 Improve security compliance by 95%



Multi-Platform Integration

Seamless integration with existing enterprise systems including ERP, CMMS, and mobile applications for unified operations.

KEY BENEFIT:
 Streamline operations by 80%



Proactive Monitoring & Alerts

Intelligent notification system with customizable triggers, escalation protocols, and comprehensive audit trails.

KEY BENEFIT:
 Reduce response time by 85%

Key Features

Comprehensive capabilities for modern asset tracking

ARCHITECTURE

System Architecture & Compatibility

- ✓ Cross-platform deployment: On-premises and cloud-ready infrastructure
- ✓ Multi-browser support: Chrome, Firefox, Microsoft Edge, Safari
- ✓ Responsive design: Desktop, tablet, and mobile device compatibility
- ✓ Seamless integration with existing IT infrastructure

USER MANAGEMENT

User & Access Management

- ✓ Secure authentication system with login and account verification
- ✓ Multi-tier user management: Create, edit, and delete user accounts
- ✓ Role-based access control: System administrators and general users
- ✓ Customizable permissions: View, edit, and delete data access rights
- ✓ Comprehensive user profiles: Name, surname, department, and contact information

DEVICE MANAGEMENT

Device Management & Configuration

- ✓ Intuitive device entry interface with comprehensive fields: ID, device type, equipment name, and location
- ✓ Bulk device import via CSV format with data validation
- ✓ Complete device lifecycle management: Add, edit, and remove devices
- ✓ Real-time device status monitoring: ID/Label, device type, location, and BLE connectivity status
- ✓ Advanced search and filtering capabilities across all device parameters

ANALYTICS

Data Visualization & Analytics

- ✓ Real-time BLE tracking data display with current device positions
- ✓ Comprehensive dashboard with visual overview of all tracked assets
- ✓ Advanced search functionality across all tracking data fields
- ✓ Multi-format data support: RSSI, MAC addresses, iBeacon, and Eddystone
- ✓ Customizable reporting and data export capabilities

COMPLIANCE

Logging, Auditing & Compliance

- ✓ Login and action audit trails (Login Log, Event Log)
- ✓ Searchable log interface with filters
- ✓ Supports Syslog export to external systems
- ✓ Minimum log retention: 90 days

SECURITY

Security & Scalability

- ✓ Unlimited user account support without licensing restrictions
- ✓ Enterprise-grade security with comprehensive access controls
- ✓ Scalable architecture suitable for hospitals, factories, and large campuses
- ✓ Zero additional software requirements for end users

NETWORK

Network Infrastructure Integration

- ✓ Compatible with leading wireless access point manufacturers
- ✓ Certified integration with Cisco Meraki, Huawei, TP-Link, and Aruba wireless infrastructure
- ✓ Seamless deployment using existing network equipment
- ✓ Professional-grade wireless signal distribution and management

MOBILE

Mobile App Support

- ✓ Fully functional mobile apps available for both **Android** and **iOS (Apple)**
- ✓ Real-time tracking, dashboard access, and alerts on mobile
- ✓ Optimized UI/UX for touch-based operation
- ✓ Supports push notifications for alerts or device movements

Mobile Applications

Professional mobile apps for Android and iOS platforms

Native Mobile Apps

Experience the full power of EazyTrax on your mobile device with our professionally designed native applications.

- ✓ Real-time asset tracking and monitoring
- ✓ Interactive dashboard with live updates
- ✓ Push notifications for critical alerts
- ✓ Offline functionality with data sync
- ✓ QR code and barcode scanning
- ✓ Optimized for touch-based operation

Available Platforms



Android

Google Play Store



iOS

Apple App Store

App Screenshots

See our intuitive interface in action



Dashboard
Real-time Overview
Asset monitoring center



Tracking
Live Asset Tracking
Real-time locations




Analytics
Data & Reports
Insights and analytics

Support Gateways


EasyTrax is compatible with a wide range of BLE gateways and devices, ensuring that your infrastructure can seamlessly integrate with our software platform.

Supported Gateway Platforms

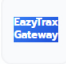
Choose from our extensive range of compatible BLE gateway solutions for your deployment.


Aruba
 Integrate Aruba BLE-enabled access points and gateways for seamless data collection.
 ENTERPRISE


500 Series
 600 Series
 700 Series


Cisco
 Leverage Cisco's robust BLE gateways to collect data across your network infrastructure.
 ENTERPRISE


WIFI 6
 WIFI 6E
 WIFI 7


EasyTrax Gateway
 Purpose-built gateways designed specifically for optimal BLE data collection and processing.
 RECOMMENDED

Radxa ZERO 3W
 PI Zero2W


Huawei
 Deploy Huawei BLE-ready access points for high-density IoT and enterprise applications.
 POPULAR

WIFI 6
 WIFI 7


TP-Link
 Utilize TP-Link BLE gateways and access points to extend your IoT and BLE network coverage.
 POPULAR

EAP670
 EAP673

EAZYTRAX V2.0

BLE ASSET TRACKING

Enterprise-grade Bluetooth Low Energy technology for precise indoor asset management.
Trusted by organizations worldwide for mission-critical operations.



DESCRIPTION

- Cross-platform deployment: On-premises and cloud-ready infrastructure.
- Multi-browser support: Chrome, Firefox, Microsoft Edge, Safari.
- Responsive design: Desktop, tablet, and mobile compatibility.
- Seamless integration with existing IT infrastructure.

USER MANAGEMENT

- Secure authentication system with login and account verification.
- Multi-tier user management: Create, edit, and delete user accounts.
- Role-based access control: System administrators and general users.
- Customizable permissions: View, edit, and delete data access rights.
- Comprehensive user profiles: Name, surname, department, and contact information.

DEVICE MANAGEMENT

- - Intuitive device entry interface with comprehensive fields: ID, device type, equipment name or personal name, and location.
- - Bulk device import via CSV with data validation.
- - Complete device lifecycle management: Add, edit, and remove devices.
- - Real-time device status monitoring: ID/Label, device type, location, and BLE connectivity status.
- - Provide information on the most recent device location within the system.
- - Advanced search and filtering capabilities across all device parameters.

ANALYTICS

- - Real-time BLE tracking data display with current device positions.
- - Comprehensive dashboard with visual overview of all tracked assets.
- - Advanced search functionality across all tracking data fields.
- - Multi-format data support: RSSI, MAC addresses, iBeacon, and Eddystone.
- - Customizable reporting and data export capabilities.

COMPLIANCE

- - Login and action audit trails (Login Log, Event Log).
- - Searchable log interface with filters.
- - Minimum log retention: 180 days.

SECURITY

- - Unlimited user account support without licensing restrictions.
- - Enterprise-grade security with comprehensive access controls.
- - Scalable architecture suitable for hospitals, factories, and large campuses.

NETWORK

- - Compatible with leading wireless access point manufacturers.
- - Certified integration with Cisco Meraki, Huawei, TP-Link, and Aruba access point infrastructure.
- - Seamless deployment using existing network equipment.
- - Professional-grade wireless signal distribution and management.

SUPPORTED DEVICES

This system is compatible with the following devices:

- Bluetooth® Beacon
 - - I3
 - - E9
 - - MBM02
 - - MBS01
- Personnel Tag
 - - B7
 - - MWC01
- Sensor Tag
 - - MST01
 - - MSP01
 - - MSR01
 - - S2
 - - S1

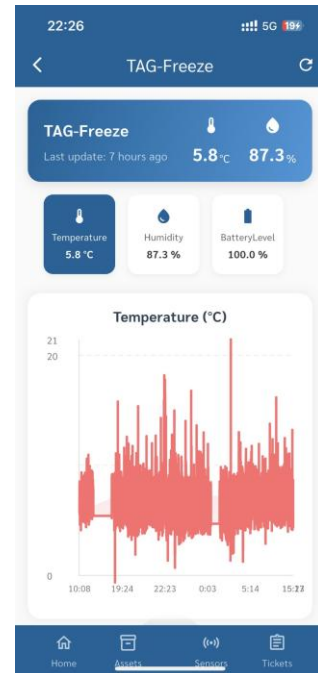
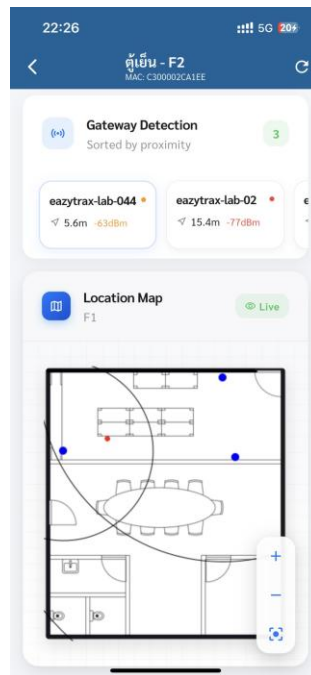
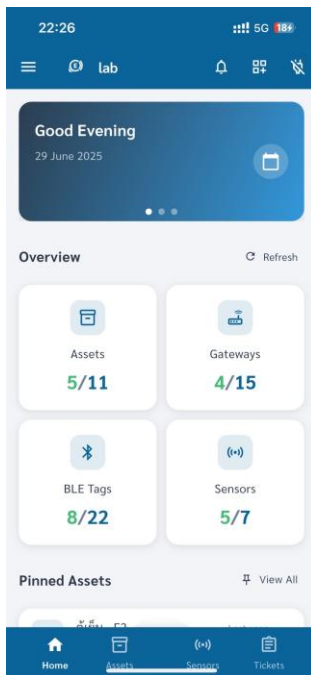
SUPPORTED SENSORS

This system supports receiving data from the following sensor types:

- - Temperature
- - Humidity
- - CO2
- - PM10
- - PM2.5
- - TVOC
- - Formaldehyde

MOBILE SUPPORT

- - Fully functional mobile apps for Android and iOS (Apple).
- - Real-time tracking, dashboard access, and alerts on mobile.
- - Optimized UI/UX for touch-based operation.
- - Supports push notifications for alerts or device movements.



SYSTEM SPECIFICATIONS

Parameter	Specification
System Uptime	99.9%
Location Accuracy	<5 meters
Supported Browsers	Chrome, Firefox, Microsoft Edge, Safari
Supported Devices	Desktop, Tablet, Mobile
Mobile Apps	Android and iOS (Apple)
Security Features	Enterprise-grade access control, role-based permissions
Deployment Options	On-premises, cloud-ready
Reporting	Customizable reports, export capabilities

For more information, please contact us at info@engineeringcraft.com or visit [www. engineeringcraft.com](http://www.engineeringcraft.com)

Eazytrax Web API ^{v1} OAS 3.0

[/swagger/v1/swagger.json](#)[API documentation](#)[Contact Eazytrax Team](#)

/Api/System/{ApplicationLogs}

GET /Api/System/{ApplicationLogs}/All

POST /Api/System/{ApplicationLogs}/Insert

POST /Api/System/{ApplicationLogs}/Update

POST /Api/System/{ApplicationLogs}/Delete

/Api/Users/{UserId}

GET /Api/Users/{UserId}/Assets/{AssetId}/Pin

GET /Api/Users/{UserId}/Assets/{AssetId}/UnPin

/Api/Inventory

GET /Api/Inventory/AssetGroups/All

POST /Api/Inventory/AssetGroups/Insert

POST /Api/Inventory/AssetGroups/Update

POST /Api/Inventory/AssetGroups/Delete

GET /Api/Inventory/Assets/All

GET /Api/Inventory/Assets/Refresh

GET /Api/Inventory/Assets/Summary

GET /Api/Inventory/Assets/Tree

GET /Api/Inventory/Assets/UnAssign/AssetGroup

GET /Api/Inventory/Assets/UnAssign/Location

POST /Api/Inventory/Assets/Insert

POST /Api/Inventory/Assets/Update

POST /Api/Inventory/Assets/Delete

GET /Api/Inventory/Assets/Json

GET /Api/Inventory/Projects/{ProjectId}/Assets/All

GET /Api/Inventory/PartNumbers/{PartNumberId}/Assets/All

GET /Api/Inventory/AssetGroups/{ModelId}/Assets/All

POST /Api/Inventory/AssetGroups/{ModelId}/Assets/Update

GET /Api/Inventory/AssetTypes/All

POST /Api/Inventory/AssetTypes/Insert

POST /Api/Inventory/AssetTypes/Update

GET /Api/Inventory/Assets/{AssetId}/AuditLogs/All

POST /Api/Inventory/Assets/{AssetId}/AuditLogs/Insert

POST /Api/Inventory/Assets/{AssetId}/AuditLogs/Update

POST /Api/Inventory/Assets/{AssetId}/AuditLogs/Delete

POST /Api/Inventory/Assets/{AssetId}/BleTag/Assign

GET /Api/Inventory/Assets/{AssetId}/BleTag/Info

GET	/Api/Inventory/Brands/All	▼
POST	/Api/Inventory/Brands/Insert	▼
POST	/Api/Inventory/Brands/Update	▼
POST	/Api/Inventory/Brands/Delete	▼
GET	/Api/Inventory/Assets/{AssetName}/Detail	▼
POST	/Api/Inventory/Assets/{AssetId}/Files/{FileId}/Delete	▼
GET	/Api/Inventory/Assets/{AssetId}/Files/{FileId}/Original	▼
GET	/Api/Inventory/Assets/{AssetId}/Files/Info	▼
POST	/Api/Inventory/Assets/{AssetId}/Files/Upload	▼
GET	/Api/Inventory/Assets/{AssetId}/HistoryLocations/All	▼
GET	/Api/Inventory/Assets/{AssetId}/HistoryLocations/Recent	▼
GET	/Api/Inventory/Assets/{AssetId}/Info	▼
POST	/Api/Inventory/Assets/{AssetId}/Images/{ImageId}/Delete	▼
GET	/Api/Inventory/Assets/{AssetId}/Images/{ImageId}/ThumbNail	▼
GET	/Api/Inventory/Assets/{AssetId}/Images/{ImageId}/Original	▼
GET	/Api/Inventory/Assets/{AssetId}/Images/Info	▼
POST	/Api/Inventory/Assets/{AssetId}/Images/Upload	▼
GET	/Api/Inventory/Assets/Import/All	▼
POST	/Api/Inventory/Assets/Import/Insert	▼
POST	/Api/Inventory/Assets/Import/Update	▼
POST	/Api/Inventory/Assets/Import/Delete	▼
GET	/Api/Inventory/Assets/{AssetId}/{Controller}/Summary	▼
GET	/Api/Inventory/Assets/{AssetId}/Notes/All	▼
POST	/Api/Inventory/Assets/{AssetId}/Notes/Insert	▼
POST	/Api/Inventory/Assets/{AssetId}/Notes/Update	▼
POST	/Api/Inventory/Assets/{AssetId}/Notes/Delete	▼
GET	/Api/Inventory/Assets/{AssetId}/Parameters/All	▼
POST	/Api/Inventory/Assets/{AssetId}/Parameters/Insert	▼
POST	/Api/Inventory/Assets/{AssetId}/Parameters/Update	▼
POST	/Api/Inventory/Assets/{AssetId}/Parameters/Delete	▼
GET	/Api/Inventory/AssetGroups/{AssetGroupId}/Parent/Set	▼
GET	/Api/Inventory/Assets/{AssetId}/Parent/Set	▼
GET	/Api/Inventory/PartNumbers/All	▼
POST	/Api/Inventory/PartNumbers/Insert	▼
POST	/Api/Inventory/PartNumbers/Update	▼
POST	/Api/Inventory/PartNumbers/Delete	▼
GET	/Api/Inventory/Brands/{brandId}/PartNumbers/All	▼
GET	/Api/Inventory/Assets/{AssetId}/Position/Set	▼
GET	/Api/Inventory/Projects/All	▼
POST	/Api/Inventory/Projects/Insert	▼
POST	/Api/Inventory/Projects/Update	▼
POST	/Api/Inventory/Projects/Delete	▼

GET	/Api/Inventory/Assets/{AssetId}/SensorDatas/All	▼
GET	/Api/Inventory/Assets/{AssetId}/SensorDatas/Recent	▼
GET	/Api/Inventory/Assets/{AssetId}/Tickets/All	▼
GET	/Api/Inventory/GateWays/{GatewayName}/Update/SerialNumber	▼
GET	/Api/Inventory/GateWays/{GatewayName}/Update/IPAddress	▼
GET	/Api/Inventory/GateWays/{GatewayName}/Update/MacAddress	▼
GET	/Api/Inventory/GateWays/{GatewayName}/Update/PartNumber	▼
GET	/Api/Inventory/GateWays/{GatewayName}/Update/ParentName	▼
GET	/Api/Inventory/Assets/{AssetName}/Update/SerialNumber	▼
GET	/Api/Inventory/Assets/{AssetName}/Update/IPAddress	▼
GET	/Api/Inventory/Assets/{AssetName}/Update/MacAddress	▼
GET	/Api/Inventory/Assets/{AssetName}/Update/PartNumber	▼
GET	/Api/Inventory/Assets/{AssetName}/Update/ParentName	▼

/Api/Telemetry



GET	/Api/Telemetry/BleTags/{TagId}/Assets/All	▼
GET	/Api/Telemetry/RealTime/BleDatas/All	▼
GET	/Api/Telemetry/BleTags/{TagId}/BleReports/All	▼
GET	/Api/Telemetry/RealTime/BleReports/All	▼
GET	/Api/Telemetry/Gateways/{GatewayId}/BleReports/All	▼
GET	/Api/Telemetry/BleTags/All	▼
GET	/Api/Telemetry/BleTags/Basic	▼
GET	/Api/Telemetry/BleTags/Avaliable	▼
GET	/Api/Telemetry/BleTags/AssignAble	▼
POST	/Api/Telemetry/BleTags/Update	▼
GET	/Api/Telemetry/BleTags/Json	▼
POST	/Api/Telemetry/BleTags/Insert	▼
POST	/Api/Telemetry/BleTags/Delete	▼
GET	/Api/Telemetry/Sensors/Levels/{SensorLevelId}/BleTags/All	▼
POST	/Api/Telemetry/Sensors/Levels/{SensorLevelId}/BleTags/Update	▼
POST	/Api/Telemetry/Sensors/Levels/{SensorLevelId}/BleTags/Delete	▼
GET	/Api/Telemetry/RealTime/BleTags/All	▼
GET	/Api/Telemetry/BleTagTypes/All	▼
POST	/Api/Telemetry/BleTagTypes/Insert	▼
POST	/Api/Telemetry/BleTagTypes/Update	▼
POST	/Api/Telemetry/BleTagTypes/Delete	▼
GET	/Api/Telemetry/Gateways/{GatewayId}/Child/All	▼
POST	/Api/Telemetry/Gateways/{GatewayId}/Child/Insert	▼
GET	/Api/Telemetry/Gateways/{GatewayId}/Child/AssignAble	▼
POST	/Api/Telemetry/Gateways/{GatewayId}/Child/Assign	▼
GET	/Api/Telemetry/RealTime/Gateways/All	▼
GET	/Api/Telemetry/Gateways/All	▼
GET	/Api/Telemetry/Gateways/Info	▼

GET	/Api/Telemetry/Gateways/L3	▼
POST	/Api/Telemetry/Gateways/Update	▼
POST	/Api/Telemetry/Gateways/Insert	▼
POST	/Api/Telemetry/Gateways/Delete	▼
GET	/Api/Telemetry/Gateways/Json	▼
GET	/Api/Telemetry/Gateways/Config	▼
GET	/Api/Telemetry/Gateways/{GatewayId}/HealthReports/All	▼
GET	/Api/Telemetry/Gateways/{GatewayId}/HealthReports/Chart	▼
GET	/Api/Telemetry/BleTags/{TagId}/HistoryLocations/All	▼
GET	/Api/Telemetry/Sensors/{TagId}/Datas/All	▼
GET	/Api/Telemetry/Sensors/{TagId}/Datas/Chart	▼
GET	/Api/Telemetry/BleTags/{BleTag}/Info	▼
GET	/Api/Telemetry/Sensors/Levels/{SensorLevelId}/BleTags/Info	▼
GET	/Api/Telemetry/Gateways/{GatewayId}/Info	▼
GET	/Api/Telemetry/RealTime/IncomingMessages/All	▼
GET	/Api/Telemetry/BleTags/{BleTag}/Locations/Reports	▼
GET	/Api/Telemetry/BleTags/{BleTag}/Locations/{locationId}/Map/Image	▼
GET	/Api/Telemetry/Gateways/{GatewayId}/Location/Info	▼
GET	/Api/Telemetry/Gateways/{GatewayId}/Location/Update	▼
GET	/Api/Telemetry/Gateways/{GatewayId}/Location/Map/Image	▼
GET	/Api/Telemetry/Gateways/{GatewayId}/Parent/Set	▼
GET	/Api/Telemetry/BleTags/{BleTagId}/Reports/All	▼
GET	/Api/Telemetry/BleTags/{BleTagId}/Reports/Recent	▼
GET	/Api/Telemetry/Sensors/All	▼
GET	/Api/Telemetry/Sensors/Avaliable	▼
POST	/Api/Telemetry/Sensors/Update	▼
GET	/Api/Telemetry/Sensors/Json	▼
POST	/Api/Telemetry/Sensors/Delete	▼
GET	/Api/Telemetry/Sensors/Levels/All	▼
POST	/Api/Telemetry/Sensors/Levels/Update	▼
GET	/Api/Telemetry/Sensors/Levels/Json	▼
POST	/Api/Telemetry/Sensors/Levels/Insert	▼
POST	/Api/Telemetry/Sensors/Levels/Delete	▼
GET	/Api/Telemetry/RealTime/Tags/All	▼
GET	/Api/Telemetry/Sensors/{ModelId}/TemporaryBleDatas/All	▼
GET	/Api/Telemetry/RealTime/BLETags/UnKnown/All	▼
POST	/Api/Telemetry/RealTime/BLETags/UnKnown/Update	▼
/Api/Operation		^
GET	/Api/Operation/Users/{UserId}/Assets/Responsible	▼
GET	/Api/Operation/Users/{UserId}/Assets/Pin	▼
GET	/Api/Operation/Tickets/{TicketId}/Assets/All	▼

POST	/Api/Operation/Tickets/{TicketId}/Assets/Add	▼
POST	/Api/Operation/Tickets/{TicketId}/Images/{ImageId}/Delete	▼
GET	/Api/Operation/Tickets/{TicketId}/Images/{ImageId}/ThumbNail	▼
GET	/Api/Operation/Tickets/{TicketId}/Images/{ImageId}/Original	▼
GET	/Api/Operation/Tickets/{TicketId}/Images/Info	▼
POST	/Api/Operation/Tickets/{TicketId}/Images/Upload	▼
GET	/Api/Operation/Users/{UserId}/{Controller}/Summary	▼
GET	/Api/Operation/Tickets/{TicketId}/{Controller}/Summary	▼
GET	/Api/Operation/Teams/{TeamId}/{Controller}/Summary	▼
GET	/Api/Operation/Logs/All	▼
POST	/Api/Operation/Logs/Insert	▼
POST	/Api/Operation/Logs/Update	▼
POST	/Api/Operation/Logs/Delete	▼
GET	/Api/Operation/Notifications/All	▼
GET	/Api/Operation/Notifications/Users/{UserId}	▼
POST	/Api/Operation/Notifications/Insert	▼
POST	/Api/Operation/Notifications/Update	▼
POST	/Api/Operation/Notifications/Delete	▼
GET	/Api/Operation/Teams/{TeamId}/Parent/Set	▼
GET	/Api/Operation/Teams/{ModelId}/TeamMembers/All	▼
GET	/Api/Operation/Teams/All	▼
POST	/Api/Operation/Teams/Insert	▼
POST	/Api/Operation/Teams/Update	▼
POST	/Api/Operation/Teams/Delete	▼
GET	/Api/Operation/Tickets/All	▼
POST	/Api/Operation/Tickets/Insert	▼
POST	/Api/Operation/Tickets/Update	▼
POST	/Api/Operation/Tickets/Delete	▼
GET	/Api/Operation/WorkItems/All	▼
POST	/Api/Operation/WorkItems/Update	▼
POST	/Api/Operation/WorkItems/Delete	▼
GET	/Api/Operation/Tickets/{TicketId}/WorkItems/All	▼
POST	/Api/Operation/Tickets/{TicketId}/WorkItems/Insert	▼
POST	/Api/Operation/Tickets/{TicketId}/WorkItems/Update	▼
POST	/Api/Operation/Tickets/{TicketId}/WorkItems/Delete	▼

/Api/Space

GET	/Api/Space/Locations/{LocationId}/Assets/All	▼
POST	/Api/Space/Locations/{LocationId}/Assets/Claim	▼
GET	/Api/Space/Locations/{LocationId}/BleTags/All	▼
GET	/Api/Space/Locations/{LocationId}/RealTime/BleTags/All	▼
GET	/Api/Space/Locations/{LocationId}/Files/All	▼
POST	/Api/Space/Locations/{LocationId}/Files/Update	▼

POST	/Api/Space/Locations/{LocationId}/Files/Insert	▼
POST	/Api/Space/Locations/{LocationId}/Files/Upload	▼
GET	/Api/Space/Locations/{LocationId}/Gateways/All	▼
GET	/Api/Space/Locations/{LocationId}/Gateways/UnClaim	▼
POST	/Api/Space/Locations/{LocationId}/Gateways/Update	▼
POST	/Api/Space/Locations/{LocationId}/Gateways/Delete	▼
GET	/Api/Space/Locations/{LocationId}/Maps/{MapId}/Image/Original	▼
GET	/Api/Space/Locations/{LocationId}/Maps/{MapId}/Image/ThumbNail	▼
POST	/Api/Space/Locations/{LocationId}/Images/{ImageId}/Delete	▼
GET	/Api/Space/Locations/{LocationId}/Images/{ImageId}/ThumbNail	▼
GET	/Api/Space/Locations/{LocationId}/Images/{ImageId}/Original	▼
GET	/Api/Space/Locations/{LocationId}/Images/Info	▼
POST	/Api/Space/Locations/{LocationId}/Images/Upload	▼
GET	/Api/Space/Locations/{LocationId}/Info	▼
GET	/Api/Space/Maps/All	▼
POST	/Api/Space/Maps/Insert	▼
POST	/Api/Space/Maps/Update	▼
GET	/Api/Space/Locations/All	▼
GET	/Api/Space/Locations/Info	▼
GET	/Api/Space/Locations/TopWithChild	▼
POST	/Api/Space/Locations/Insert	▼
POST	/Api/Space/Locations/Update	▼
POST	/Api/Space/Locations/Delete	▼
GET	/Api/Space/Locations/Json	▼
GET	/Api/Space/Locations/Types/All	▼
POST	/Api/Space/Locations/Types/Insert	▼
POST	/Api/Space/Locations/Types/Update	▼
POST	/Api/Space/Locations/Types/Delete	▼
GET	/Api/Space/Locations/{LocationId}/Maps/Images/Original	▼
GET	/Api/Space/Locations/{LocationId}/Maps/Images/ThumbNail	▼
GET	/Api/Space/Locations/{LocationId}/Maps/{MapId}/ZeroPoint	▼
GET	/Api/Space/Maps/Types/{MapTypeId}/Maps	▼
GET	/Api/Space/Maps/Types/All	▼
POST	/Api/Space/Maps/Types/Insert	▼
POST	/Api/Space/Maps/Types/Update	▼
POST	/Api/Space/Maps/Types/Delete	▼
GET	/Api/Space/Locations/{LocationId}/Parent/Set	▼
GET	/Api/Space/Locations/{LocationId}/Tree/All	▼
POST	/Api/Space/Locations/{LocationId}/Tree/Insert	▼
POST	/Api/Space/Locations/{LocationId}/Tree/Update	▼
POST	/Api/Space/Locations/{LocationId}/Tree/Delete	▼

/Api/Networking

GET	/Api/Networking/IPSubnets/{IPSubnetId}/Assets/All	▼
GET	/Api/Networking/IPSubnets/{IPSubnetId}/AvailableSubnets/All	▼
GET	/Api/Networking/IPSubnets/{IPSubnetId}/Child/All	▼
GET	/Api/Networking/Cables/All	▼
POST	/Api/Networking/Cables/Insert	▼
POST	/Api/Networking/Cables/Update	▼
GET	/Api/Networking/IPSubnets/All	▼
POST	/Api/Networking/IPSubnets/Insert	▼
POST	/Api/Networking/IPSubnets/Update	▼
POST	/Api/Networking/IPSubnets/Delete	▼
GET	/Api/Networking/IPSubnets/{IPSubnetId}/Parent/Set	▼

/Api/BleReports

GET	/Api/BleReports/All	▼
GET	/Api/BleReports/Json	▼

/Api/All

GET	/Api/All	▼
-----	----------	---

/Api/Insert

POST	/Api/Insert	▼
------	-------------	---

/Api/Update

POST	/Api/Update	▼
------	-------------	---

/Api/Delete

POST	/Api/Delete	▼
------	-------------	---

/Api/GateWayGroups

GET	/Api/GateWayGroups/All	▼
POST	/Api/GateWayGroups/Insert	▼
POST	/Api/GateWayGroups/Update	▼
POST	/Api/GateWayGroups/Delete	▼

/Api/Summary

GET	/Api/Summary	▼
-----	--------------	---

/Api/System

GET	/Api/System/Licenses/All	▼
POST	/Api/System/Licenses/Insert	▼
POST	/Api/System/Licenses/Update	▼
GET	/Api/System/UploadFiles/All	▼
POST	/Api/System/UploadFiles/Insert	▼
POST	/Api/System/UploadFiles/Update	▼

/Api/{Users}

GET	/Api/{Users}/All	▼
POST	/Api/{Users}/Insert	▼
POST	/Api/{Users}/Update	▼
POST	/Api/{Users}/Delete	▼

POST

/Api/{Users}/Authen

